

## TECHNICAL DATA SHEET

### RAPI IP65 / Aga-Power-Led® White

VERSION - 11.04.2017

#### STANDARD LUMINAIRE

Reference	RAPI
Protection Class	IP65
Lighting Source	Aga-Power-Led® Mono
Connector	Festoon on B'Light conductor 16mm <sup>2</sup>
Dimensions	130 x 122mm
Standard Length	125 - 510 - 1005 - 1500 - 1995mm
Length on measure	on request up to 1995mm
Nb Lighting Unit	17 LED/m
Voltage	24V
Power	57.8 W/m
Connecting Cable	One Side: 1m cable PUR 2x1.5mm <sup>2</sup>
Grid	Anti Glare: GAP
End Caps	EFLA
Recessed Box	RAPI BOX + COVER

#### FINISH

##### Recessed Box

Standard	Stainless Steel
On request	Powder Coating RAL

##### Glass

Standard	Clear Glass
On request	Opaline Glass

#### ON REQUEST

Connecting Plug	AMS / AF or AMS-E / AF-E (IP68)
Dimming Option	1-10V, Dali, KNX <i>Ask technical departement for more information</i>

#### LIGHTING SOURCE

Lighting Source	Aga-Power-Led® Mono
Ref	03LP22
Power	3.4W
Voltage	24V
Beam Angle	120°
CRI	80
Lifetime	60'000h
Working T°	-30°C ~ +50°C

#### Color Temperature & Luminous Flux / Unit

CCT	<b>2900K</b>	<b>4000K</b>
Luminous Flux/Unit	198~246 lm	243~345 lm

#### CERTIFICAT



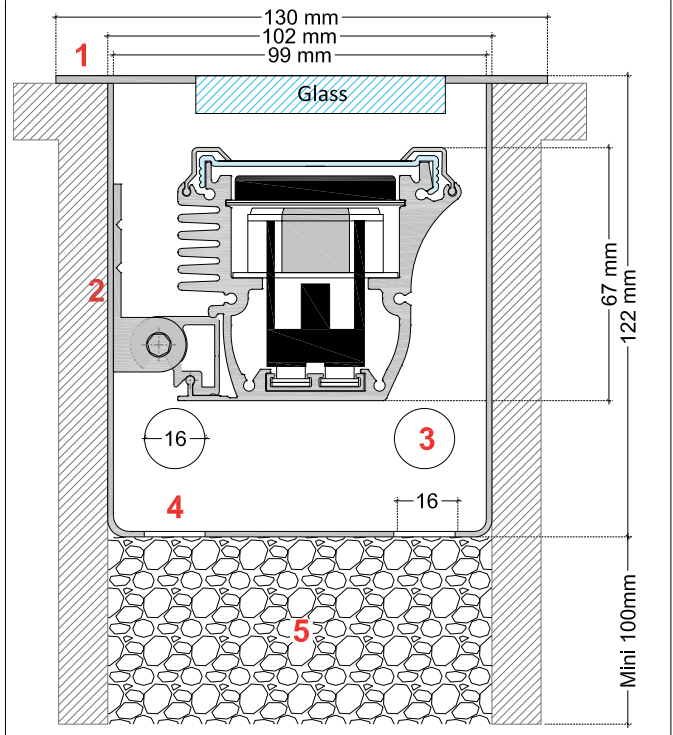
#### APPLICATION: Upward lighting only for Walls, Facades, Columns



#### RAPI

When installing the luminaire in the ground, it is important and essential to provide a proper stone drainage so that condensation can drain out.

- 1 : Ground recessed LAPL luminaire
- 2 : Stainless steel RAPI BOX
- 3 : Holes ø16mm for electrical tube
- 4 : Drain holes so that condensation can drain out
- 5 : Stone drainage minimum 100mm



#### ON REQUEST

Connecting plug AF/AMS



Connecting plug AF-E/AMS-E (IP68)

